

# RadioPro Dispatch™ Software

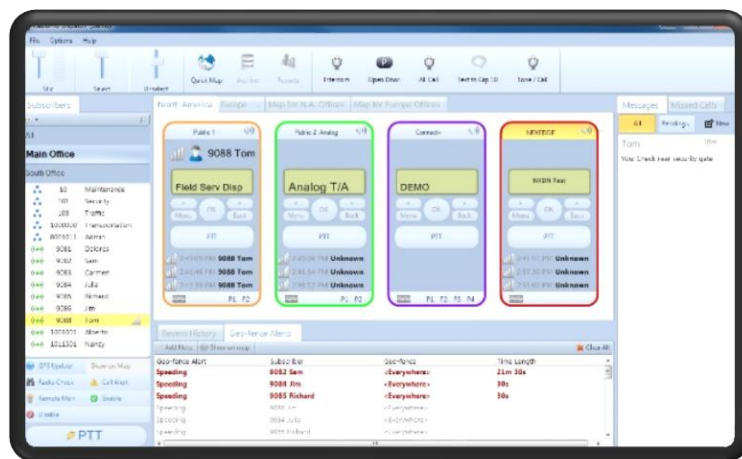


## Computer Aided Dispatch over IP

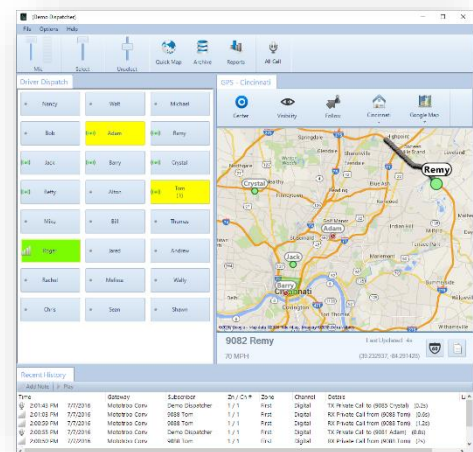
RadioPro Dispatch™ software is a software console for Windows® operating systems and optimized for Motorola MOTOTRBO™ or Kenwood NEXEDGE® radio systems. It is an ideal solution for projects requiring communication with multiple simultaneous radio talk groups or analog channels. Multiple RadioPro Dispatch™ clients and radio users may be centrally located or scattered among various locations connected by an IP network (see diagram next page). A Dispatch console may be configured to include *GPS Mapping, Cellular Device Subscriber Locating, Reverse Geocoding, Voice Dispatch, Remote I/O, IoT, and Text Messaging* modules. Standard features include *History Logging with Voice Playback, and Archive Search*. RadioPro Dispatch™ is designed with an intuitive user interface to minimize learning time and to maximize user efficiency.



RadioPro Dispatch™ systems include client software, RadioPro™ IP Gateway hardware, and one-time licensing. Besides RadioPro Dispatch™ software, systems may also utilize RadioPro Solo™ as well as the RadioPro Talk™ software for Android (API level 19) and Apple (iOS version 9.0 minimum) devices. A host of accessories are available to implement an enterprise solution. These approved devices include desk microphones, headsets, footswitches, and touch screens – all with Push-to-Talk capabilities.



## Subscriber Grid Layout



RadioPro Dispatch™ software is the most feature-rich dispatch console product for 2-way radio systems, with the following elements:

- **Voice Dispatching** with:  
70 simultaneous Talk Groups, Cross-Muting, Patching, Multi-Select with Select/Unselect Audio, Custom Action Buttons (for All-Call, All-Text, and All-Emergency), new Subscriber Grid Layout
- **History Logging** with Voice Playback and GPS Locations
- **Text Messaging**
- **GPS Mapping (AVL)** with:  
Place Markers, Named Areas, Street View, Multiple Maps, Show/Hide Zoom to Visible Subscribers, Geo-fences, Location Presets, Image Overlays, Smart Phone Device Location and Private Calling
- **Remote I/O IoT** (Internet of Things) or Telemetry (radio I/O)

Download RadioPro Dispatch demo software from our website:

[https://ctiproducts.com/RadioPro\\_DemoDownloads.html](https://ctiproducts.com/RadioPro_DemoDownloads.html)

# RadioPro Dispatch™ Software

## Subscriber Grid

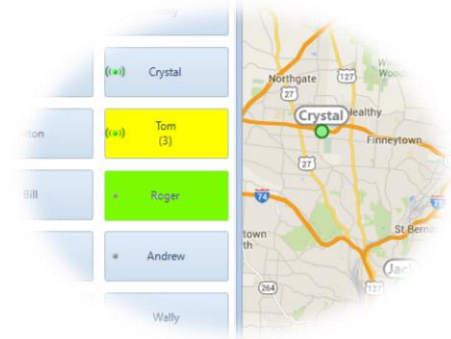
Use the Subscriber Grid Layout to see the status of your entire fleet at once. This layout is perfect for many fleet dispatching applications, including callboxes and taxi / limo services. The cells for each subscriber will provide the following status and actions:

### Status

- Available/Unavailable
- Missed Call (yellow and # of calls)
- Receiving (green)
- Transmitting (red)
- Emergency (Icon)

### Actions

- Show on Map
- Call
- Call Alert
- Radio Check
- Replay Audio

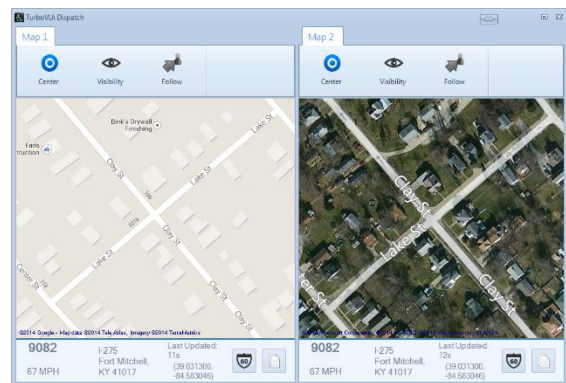


## Feature Highlights

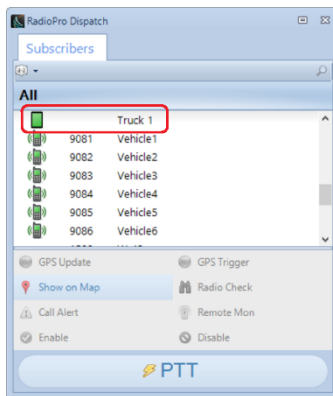
### Subscriber Icons



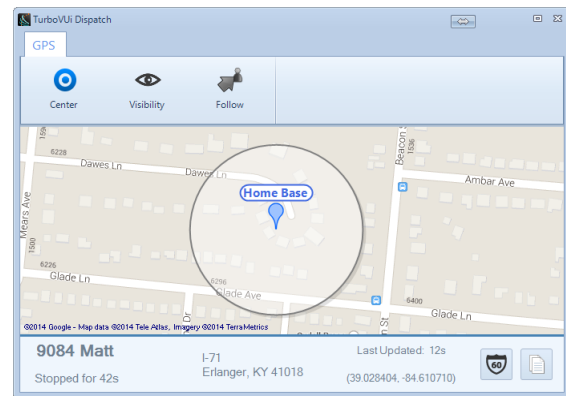
### Multiple Maps



### Cell Phone Subscribers



### Place Markers



# RadioPro Dispatch™ Software

## RadioPro Dispatch™ Features

<i><b>Voice Features</b></i>
Simultaneous Talk Groups
Private and Group Calls
Radio ID Alias Names
Cross-muting
Select & Unselect Volume
Multi-select
Tx VU Meter
Subscriber Grouping
Subscriber Sort & Search
All-call, All-text, All-emergency
Radio Check
Call Alert to Subscriber
Remote Monitor
Remote Disable/Enable
Custom Action Buttons
Voice Logging and Playback
Patching
Pre-canned Audio Messages
Tone before Voice
Missed Call Tracker
Fast Channel-Audio-Isolate
Auto Un-mute during Emergency
Emergency Call-back Button
Subscriber Grid Layout (New)
Cellular Device Private Calling

<i><b>Text Messaging Features</b></i>
Grouped by Conversation
Send to Multiple Subscribers or Groups
Delay Sending
Message Status: Complete, Fail, Pending
Conversation View or Message View

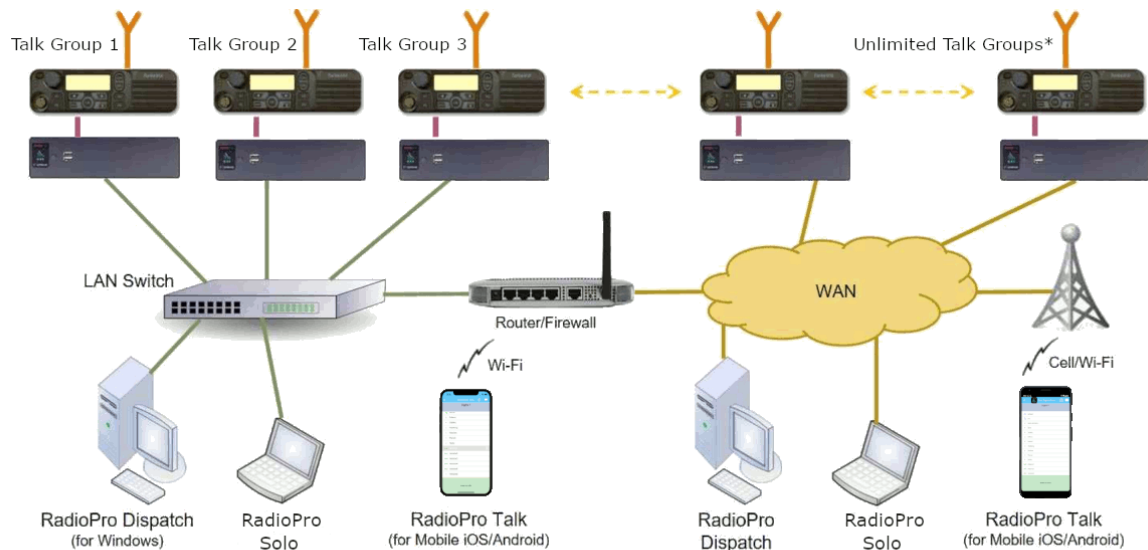
<i><b>AVL/GPS Features</b></i>
Map Services: Google, Bing, Open Street
Place Markers with Show/hide
Named Areas
Street View
Multiple Maps
Show/hide Subscribers
Zoom to Visible Subscribers
Stopped/moving Status Icons
Trail Crumbs with STR Technology
Map Location Presets
Follow Subscriber
Image Overlays
Telemetry Support using Tallysman TW200 Modules
Geo-fences for Polygons & Routes
Geo-fence Conditions: Enter, Exit, Speeding, Time
Email and Text Alerts for Geo-fence Violations
Reports for Stopped Times, Distance, etc.
Emergency Location Indicator
Subscriber Status: ID/Alias, Speed, Last Update
Copy Subscriber Status to Clipboard
Cellular Device Location

<i><b>Remote I/O</b></i>
Telemetry (Radio-based) <b>Tallysman TW200</b> modules
Store-and-forward for GPS data
Send GPS location on events
IoT (Internet of Things) <b>Advantech Adam</b> modules
Control and monitor door access
Monitor temperature, pressure, voltage, etc.
Control actuators

# RadioPro Dispatch™ Software

## RadioPro™ System

As shown in the diagram below, a RadioPro™ system may have a mixture of client types; Dispatcher, Talk, and Mobile. The IP Gateways interface the radio system to an IP network, ensuring easy wide-area deployment without purchasing and configuring server PCs.



\* Max 80 Clients connected to 1 Gateway. Max 70 Gateways connected to 1 Dispatch Client.

Ordering Information	
S1-61770	RadioPro Dispatcher Core Required for each Dispatch client. Includes Event & Voice Logger, and Archive Viewer.
S1-61771	RadioPro Dispatch™ Voice Module Optional. Can be ordered with 1 to 40 Talk Groups.
S1-61772	RadioPro Dispatch™ GPS Module Optional.
S1-61773	RadioPro Dispatch™ Telemetry Module Optional.
S1-61774	RadioPro Dispatch™ Text Messaging Module Optional.
S2-61815	RadioPro™ IP Gateway Kit One required for each talk group. Includes power supply. Order radio interface cable separately. (See ordering instructions for RadioPro™ IP Gateway.)
Accessories	See the RadioPro Accessories Catalog

### Notes

Motorola XPR 2500 / XPR 5550 / XPR 5550e / APX 4500 control station radios should be supplied by a Motorola authorized 2-way radio dealer. Kenwood NX-700 / NX-800 / NX-720 / NX-820 / NX-3720 / NX-3820 / NX-5700 / NX-5800 radios supplied by Kenwood authorized radio dealers. Dispatcher console PC, microphone, PTT accessories, and desk speakers should be supplied by Dealer or End-user. Product options and specifications are subject to change without notice.



CTI Products, Inc. [www.ctiproducts.com](http://www.ctiproducts.com) [sales@ctiproducts.com](mailto:sales@ctiproducts.com) +1 513-595-5900

RadioPro, RadioPro Dispatch, RadioPro Talk and RadioPro Solo are trademarks of CTI Products, Inc. MOTOROLA, MOTO, MOTOROLA SOLUTIONS, and the Stylized M Logo are registered trademarks of Motorola Trademark Holdings, LLC and are used under license. All other trademarks are the property of their respective owners.

12/20/2021